

NEW from Hensall Co-op!

Precision Dry Nutrient Application

Save \$\$\$ and Book Acres Today – Hensall Co-op is offering a \$2.00/ac savings for booking acres before April 30th, 2022.

Effectively and Precisely Manage your Nitrogen Investment

The program utilizes a “Base-Plus” strategy approach to supplying nutrients to your crops. Apply a base amount of nitrogen up front and Hensall Co-op drop pipes the balance precisely at side-dress timing.

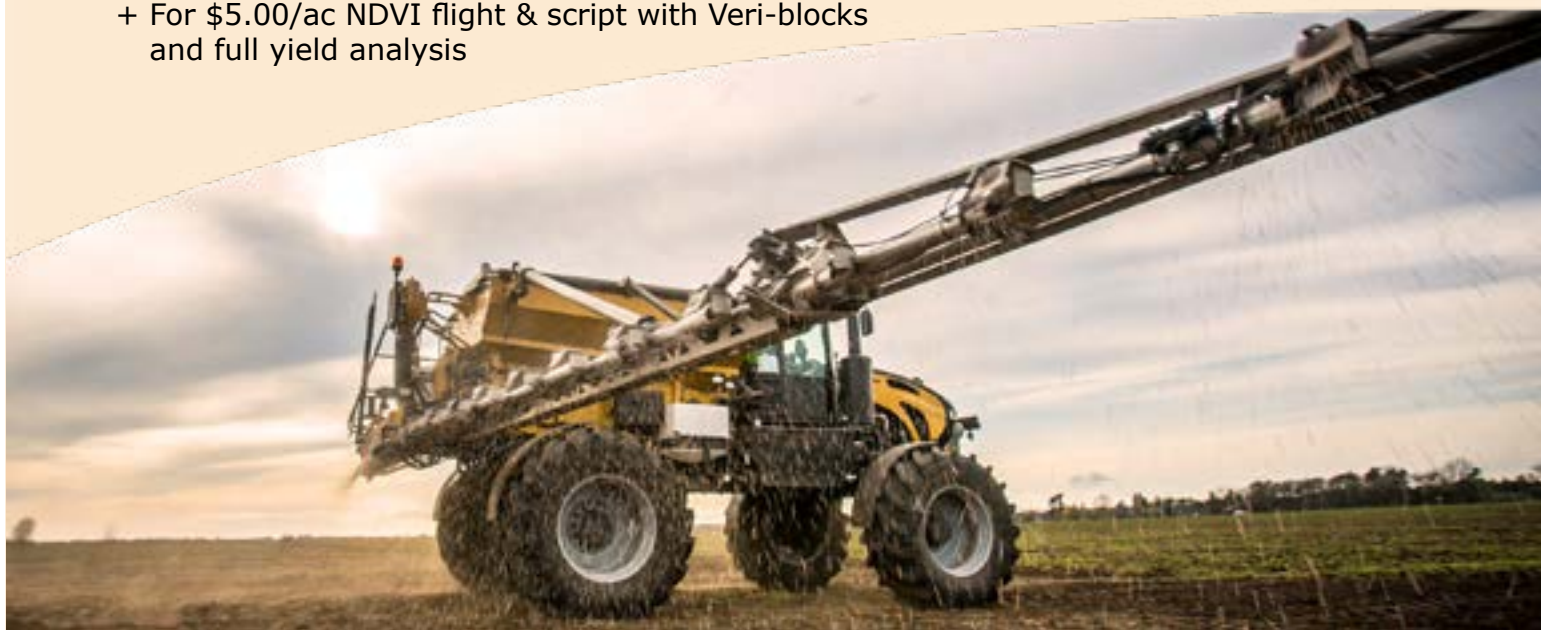
The Right Amount of Product Applied in the Right Place at the Right Time

- Split nitrogen applications are the truest form of sustainable, socio-economic and environmental nutrient systems
- Ability to strategically supply blended product precisely without fear of product segregation
- Strategically places nitrogen below the canopy
- Application timing at 10-leaf to early-tassel timing when 65% of the nitrogen is taken up by the crop (V10-R2)
- VR nitrogen capabilities. For those interested let a NDVI flight guide direction to a VR nitrogen script
- Watch the video: <https://bit.ly/3u577fJ>



Program Details:

- A base nitrogen (or manure) application of 50% of total needs should be applied up front
- Remaining nitrogen is drop-piped below the crop canopy after 10-leaf stage
- Consideration should be given to VRN script for second pass
 - + Additional \$3.00/ac for NDVI flight & script
 - + For \$5.00/ac NDVI flight & script with Veri-blocks and full yield analysis



For more information contact your Local Hensall Co-op Field Marketer or one of our Hensall Co-op Locations!

Hensall Co-op's High Clearance/Side-Dress Program

How the pneumatic air boom is superior versus traditional spinner top dress programs:

- Reduced risk of volatilization as product placement is below the crop canopy and not broadcast over top of the crop
- Ability to blend multiple products without fear of product segregation
- Strategic product placement removes the fear of fertilizer burn or whorl burn witnessed in traditional spinner programs
- New leading TurnLogic technology balances fertilizer distribution in odd-shaped fields as well reduces over-spreading in corners. It increases or decreases the rate as needed for each boom. During a turn, the machine will apply less to the inside boom and more to the outside boom. If it overlaps, it will shut it off as needed. See video at <https://www.youtube.com/watch?v=l20Z5xclack>



Features of the Program:

- New 70 foot (28 x 30" rows) boom is 17.5% larger than 60 foot booms on the market. This means less field passes and overall reduction in tire compaction footprint
- Unparallel precision versus traditional spinner programs. Wind impact is minimized by 43% and boom spreads with 25-35% more accuracy.
- New state-of-the-art TurnLogic
- Ability to apply blended products to address multiple nutrition aspects such as potassium/sulphur/micronutrients.
- Wide application window with capabilities to apply up to 6-foot tall corn
- Cover crop placement in crop
- 4-Wheel steering allows for tighter turns which equates to less crop damage
- 4R Compliant approach
- VR Nitrogen scripts can be created using algorithms from NDVI flight at row closure. Full yield analysis abilities for those wishing to take to yield



Additional considerations:

- Addition of N stabilizers to protect from volatilization
- Addition of sulphur to the blend in the form of AMS
- Concept driven for your corn crop but looking to do trials in wide row dry beans too
- PSNT (pre-side-dress nitrate test) to fine tune final rate



**For more information contact your Local Hensall Co-op Field Marketer
or one of our Hensall Co-op Locations!**